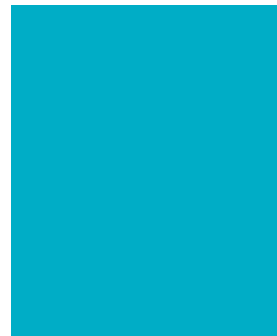
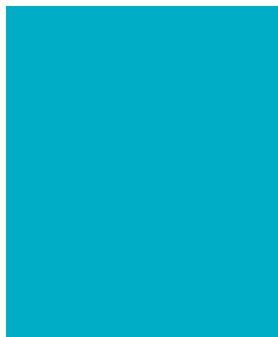


Section E: 11-Point Scorecard Historic Data and Placeholders



NHS England Board Report
March 2014

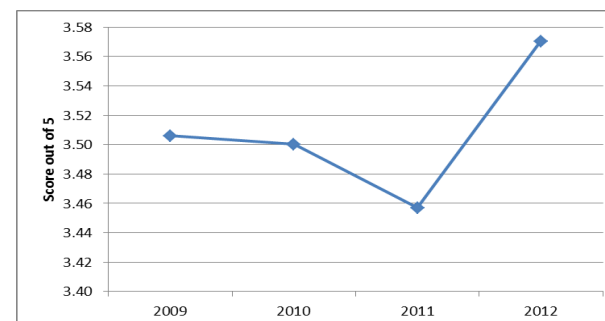


Priority 2 - Motivated, positive NHS Staff

Staff friends and family test (Currently using "Staff recommendation of the trust as a place to work or receive treatment" average score from NHS Staff Survey as a proxy for Staff FFT)

		Score out of 5	% Change	Direction
Current Value	2012	3.57		
Change on previous year	2011	0.11	3.28%	↑
Long term change	N/A	N/A	N/A	

Desired direction: Up

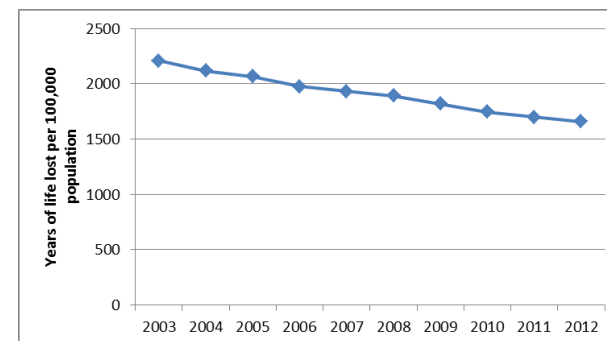


Priority 3: Preventing people from dying prematurely

NHS Outcomes Framework, indicator 1a.i: Potential Years of life lost from causes considered amenable to healthcare (Adults and Children – Females)

		Years of life lost per 100,000 population	% Change	Direction
Current Value	2012	1658		
Change on previous year	2011	-42	-2.45%	↓
Long term change	2003	-549	-24.86%	↓

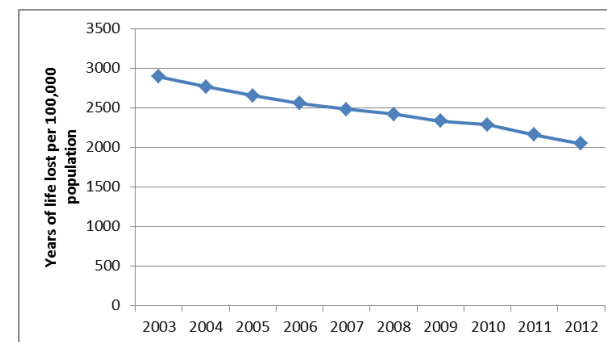
Desired direction: Down



NHS Outcomes Framework, indicator 1a.i: Potential Years of life lost from causes considered amenable to healthcare (Adults and Children – Males)

		Years of life lost per 100,000 population	% Change	Direction
Current Value	2012	2044		
Change on previous year	2011	-113	-5.25%	↓
Long term change	2003	-848	-29.31%	↓

Desired direction: Down

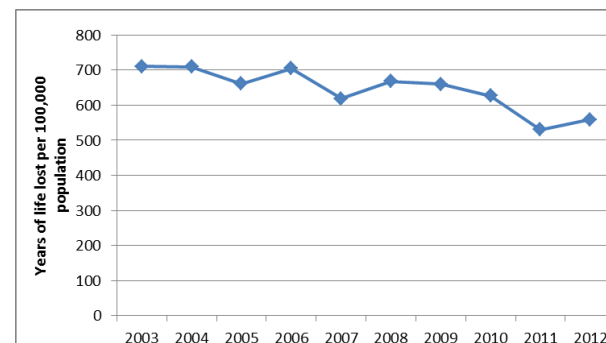


Priority 3: Preventing people from dying prematurely

NHS Outcomes Framework, indicator 1a.ii: Potential Years of Life Lost (PYLL) from causes considered amenable to health care (Children and Young People - Females)

		Years of life lost per 100,000 population	% Change	Direction
Current Value	2012	560		
Change on previous year	2011	29	5.55%	↑
Long term change	2003	-151	-21.20%	↓

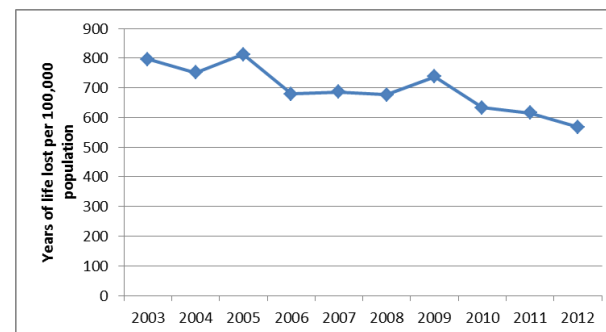
Desired direction: Down



NHS Outcomes Framework, indicator 1a.ii: Potential Years of Life Lost (PYLL) from causes considered amenable to health care (Children and Young People - Males)

		Years of life lost per 100,000 population	% Change	Direction
Current Value	2012	568		
Change on previous year	2011	-48	-7.84%	↓
Long term change	2003	-229	-28.77%	↓

Desired direction: Down

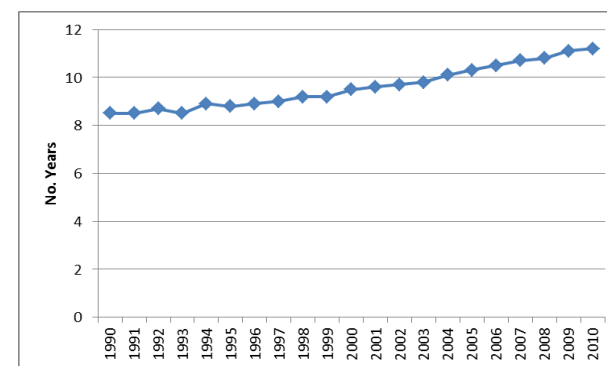


Priority 3: Preventing people from dying prematurely

NHS Outcomes Framework, indicator 1b.i: Life expectancy at 75 - males

		No. Years	% Change	Direction
Current Value	2010	11.2		
Change on previous year	2009	0.1	0.90%	↑
Long term change	1990	2.7	31.76%	↑

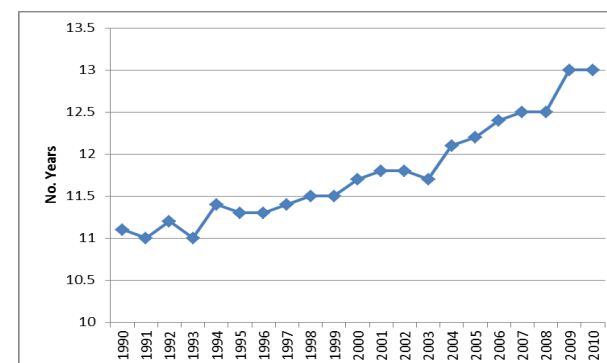
Desired direction: Up



NHS Outcomes Framework, indicator 1b.ii: Life expectancy at 75 - females

		No. Years	% Change	Direction
Current Value	2010	13.0		
Change on previous year	2009	0.0	0.00%	↔
Long term change	1990	1.9	17.12%	↑

Desired direction: Up

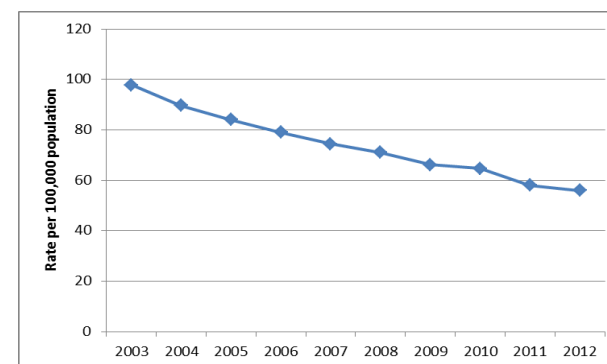


Priority 3: Preventing people from dying prematurely

NHS Outcomes Framework, indicator 1.1: Under 75 mortality rate from cardiovascular disease

		Rate per 100,000 population	% Change	Direction
Current Value	2012	56.0		
Change on previous year	2011	-2.0	-3.45%	↓
Long term change	2003	-41.8	-42.74%	↓

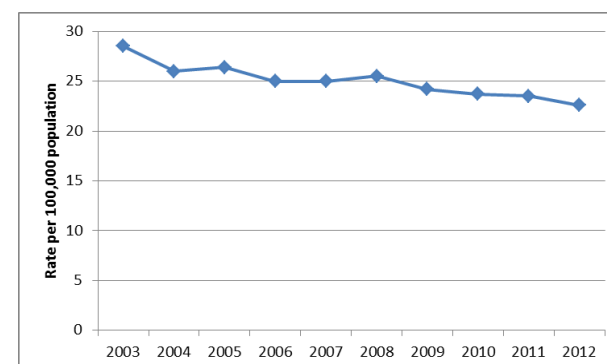
Desired direction: Down



NHS Outcomes Framework, indicator 1.2: Under 75 mortality from respiratory disease

		Rate per 100,000 population	% Change	Direction
Current Value	2012	22.6		
Change on previous year	2011	-0.9	-3.83%	↓
Long term change	2003	-5.9	-20.70%	↓

Desired direction: Down

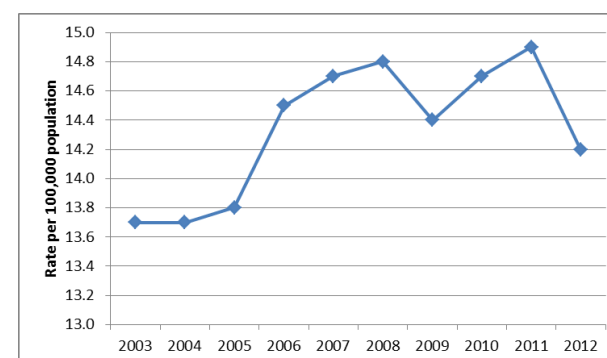


Priority 3: Preventing people from dying prematurely

NHS Outcomes Framework, indicator 1.3: Under 75 mortality rate from liver disease

		Rate per 100,000 population	% Change	Direction
Current Value	2012	14.2		
Change on previous year	2011	-0.7	-4.70%	↓
Long term change	2003	0.5	3.65%	↑

Desired direction: Down



NHS Outcomes Framework, indicator 1.4.i:
One year survival from colorectal cancer

% surviving one-year

Period	2010	2011
Value	74.5%	74.4%
Change		-0.10%
% change		-0.13%

Desired direction: Up

NHS Outcomes Framework, indicator 1.4.ii:
Five year survival from colorectal cancer

% surviving five-years

Period	2010	2011
Value	54.9%	55.3%
Change		0.4%
% change		0.73%

Desired direction: Up

Priority 3: Preventing people from dying prematurely

NHS Outcomes Framework, indicator 1.4.iii: One-year survival from breast cancer

2011	% surviving 1 year	95.5%
------	--------------------	-------

NHS Outcomes Framework, indicator 1.4.iv: Five-year survival from breast cancer

% surviving five-years

Period	2010	2011
Value	83.7%	84.3%
Change		0.5%
% change		0.62%

Desired direction: Up

Priority 3: Preventing people from dying prematurely

NHS Outcomes Framework, indicator 1.4.v:
One-year survival from lung cancer

% surviving one-year

Period	2010	2011
Value	31.0%	31.6%
Change		1.9%
% change		0.6%

Desired direction: Up

NHS Outcomes Framework, Indicator 1.4.vi:
Five-year survival from lung cancer

% surviving five-years

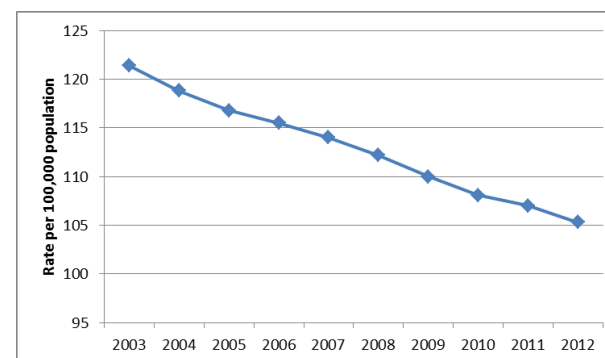
Period	2010	2011
Value	9.0%	9.8%
Change		0.8%
% change		8.9%

Desired direction: Up

NHS Outcomes Framework, indicator 1.4.vii: Under 75 mortality from cancer

		Rate per 100,000 population	% Change	Direction
Current Value	2012	105		
Change on previous year	2011	-2	-1.59%	↓
Long term change	2003	-16	-13.26%	↓

Desired direction: Down



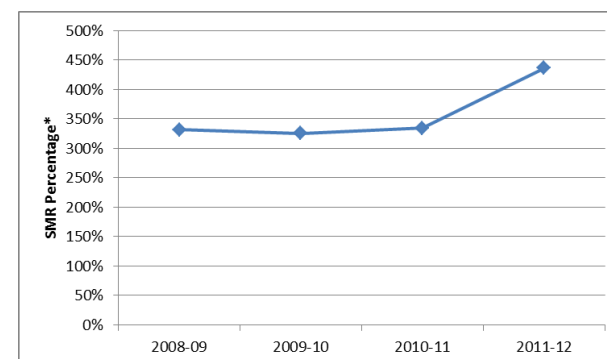
Priority 3: Preventing people from dying prematurely

NHS Outcomes Framework, indicator 1.5: Excess under 75 mortality rates in adults with serious mental illness

		SMR Percentage*	% Change	Direction
Current Value	2011-12	436.2%		
Change on previous year	2010-11	1	30.51%	↑
Long term change	N/A	N/A	N/A	

* Standardised mortality ratio (SMR) expressed as a percentage based on general population and mental health population mortality rates

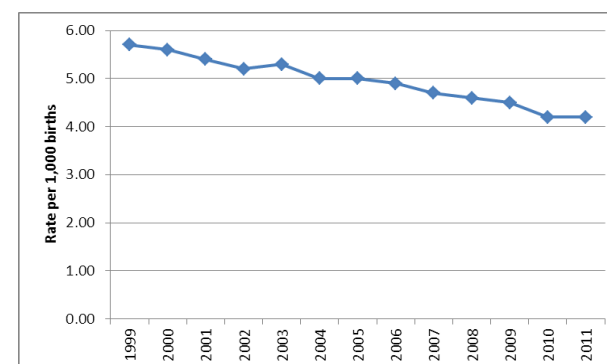
Desired direction: Down



NHS Outcomes Framework, indicator 1.6.i: Infant mortality

		Rate per 1,000 births	% Change	Direction
Current Value	2011	4.2		
Change on previous year	2010	0.0	0.00%	↔
Long term change	1999	-1.5	-26.32%	↓

Desired direction: Down

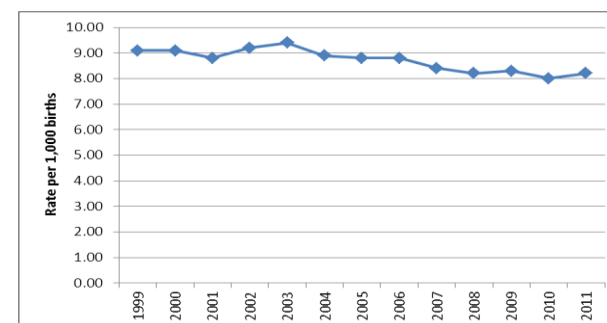


Priority 3: Preventing people from dying prematurely

NHS Outcomes Framework, indicator 1.6.ii: Neonatal mortality and still-births

		Rate per 1,000 births	% Change	Direction
Current Value	2011	8.2		
Change on previous year	2010	0.2	2.50%	↑
Long term change	1999	-0.9	-9.89%	↓

Desired direction: Down



NHS Outcomes Framework, indicator 1.6.iii: Five-year survival from all cancers in children

Indicator definition is still in development

NHS Outcomes Framework, indicator 1.7: Excess under 60 mortality in people with learning disabilities

Indicator calculation and data source still to be identified

Priority 4: Enhancing quality of life for people with long-term conditions

NHS Outcomes Framework, indicator 2: Health related quality of life for people with long-term conditions

EQ-5D Score

Period	2011-12	2012-13
Value	0.73	0.73
Change		0
% change		0%

Desired direction: Up

NHS Outcomes Framework, indicator 2.1: Proportion of people feeling supported to manage their own condition

% feeling supported

Period	2011-12	2012-13
Value	69.6%	69.3%
Change		-0.3%
% change		-0.4%

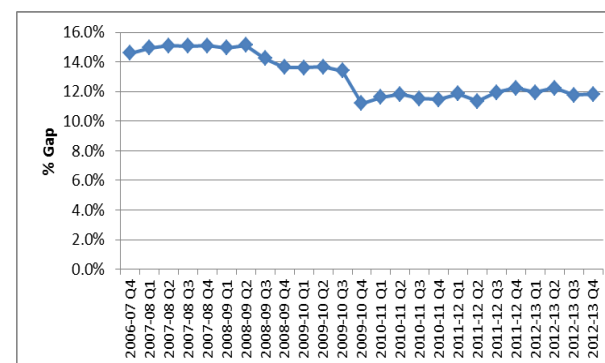
Desired direction: Up

NHS Outcomes Framework, indicator 2.2: Employment of people with long-term conditions

		% Gap	% Change	Direction
Current Value	2012-13 Q4	11.8%		
Change on previous year	2011-12 Q4	-0.4%	-3.51%	↓
Long term change	2006-07 Q2	-3.3%	-22.05%	↓

Desired direction: Down

Gap refers to the difference from the employment rate of all adults

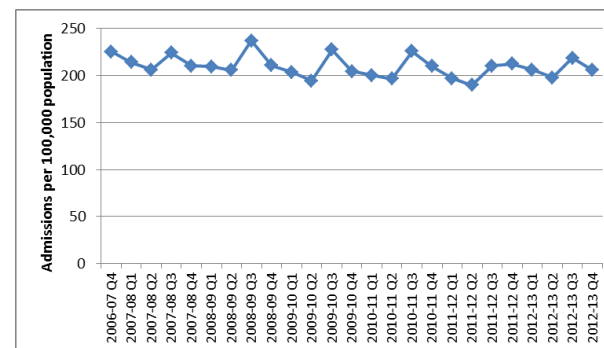


Priority 4: Enhancing quality of life for people with long-term conditions

NHS Outcomes Framework, indicator 2.3.i: Unplanned hospitalisation for chronic ambulatory care sensitive conditions (all ages)

		Admissions per 100,000 population	% Change	Direction
Current Value	2012-13 Q4	205.5		
Change on previous year	2011-12 Q4	-6.4	-3.02%	↓
Long term change	2003-04 Q1	-25.4	-11.00%	↓

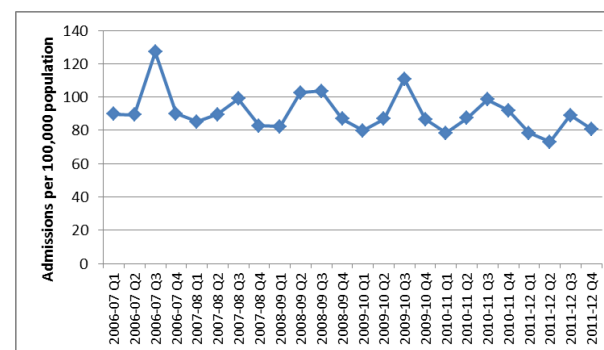
Desired direction: Down



NHS Outcomes Framework, indicator 2.3.ii: Unplanned hospitalisation for asthma, diabetes and epilepsy in under 19s

		Admissions per 100,000 population	% Change	Direction
Current Value	2012-13 Q4	77.0		
Change on previous year	2011-12 Q4	-3.9	-4.82%	↓
Long term change	2003-04 Q1	-1.7	-2.16%	↓

Desired direction: Down



Priority 4: Enhancing quality of life for people with long-term conditions

NHS Outcomes Framework, indicator 2.4: Health related quality of life for carers

EQ-5D Score

Period	2011-12	2012-13
Value	0.81	0.80
Change		0.01
% change		1.23%

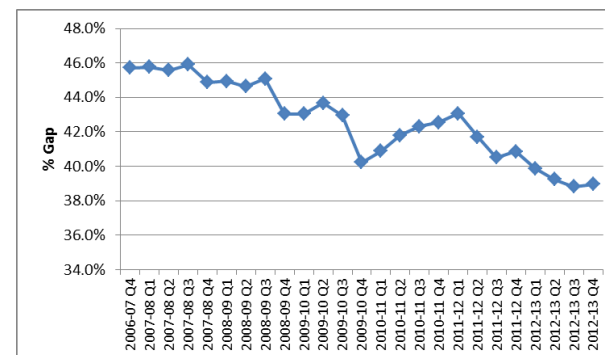
Desired direction: Up

NHS Outcomes Framework, indicator 2.5: Employment of people with mental illness

		% Gap	% Change	Direction
Current Value	2012-13 Q4	39.0%		
Change on previous year	2011-12 Q4	-1.9%	-4.60%	↓
Long term change	2006-07 Q2	-5.8%	-13.05%	↓

Desired direction: Down

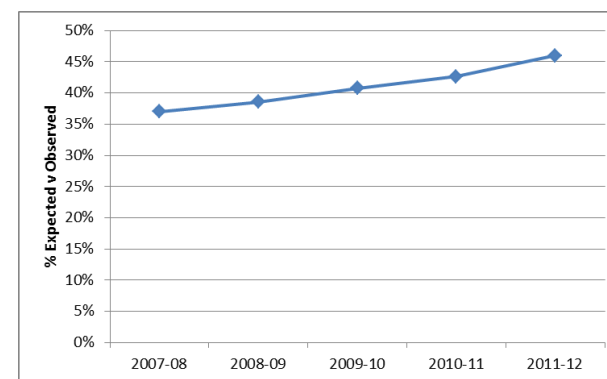
Gap refers to the difference from the employment rate of all adults



Priority 4: Enhancing quality of life for people with long-term conditions

NHS Outcomes Framework, indicator 2.6.i: Estimated diagnosis rate for people with dementia

		% Expected v Observed	% Change	Direction
Current Value	2012-13	48.7%		
Change on previous year	2011-12	2.7%	5.97%	↑
Long term change	2007-08	11.7%	31.74%	↑



NHS Outcomes Framework, indicator 2.6.ii: A measure of the effectiveness of post-diagnosis care in sustaining independence and improving quality of life

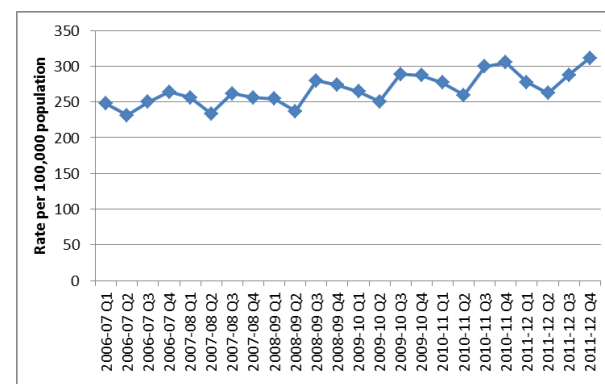
Indicator definition in development

Priority 5: Helping people to recover from episodes of ill health or following injury

NHS Outcomes Framework, indicator 3a: Emergency admissions for acute conditions that should not usually require hospital admission (all ages)

		Rate per 100,000 population	% Change	Direction
Current Value	2012-13 Q4	314.9		
Change on previous year	2011-12 Q4	3.2	1.03%	↑
Long term change	2003-04 Q1	106.3	50.96%	↑

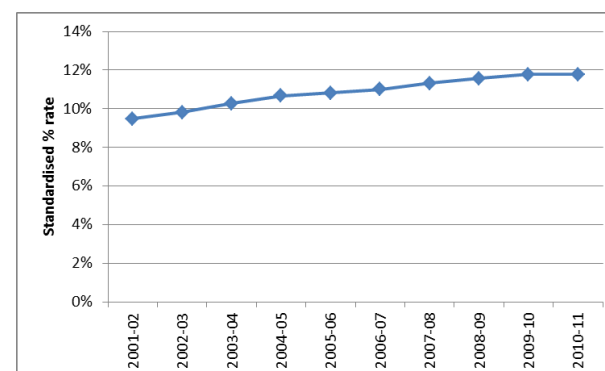
Desired direction: Down



NHS Outcomes Framework, indicator 3b: Emergency readmissions within 30 days of discharge from hospital

		Standardised % rate	% Change	Direction
Current Value	2010-11	11.8%		
Change on previous year	2009-10	0.0%	0.00%	↔
Long term change	2001-02	2.3%	24.26%	↑

Desired direction: Down



Priority 5: Helping people to recover from episodes of ill health or following injury

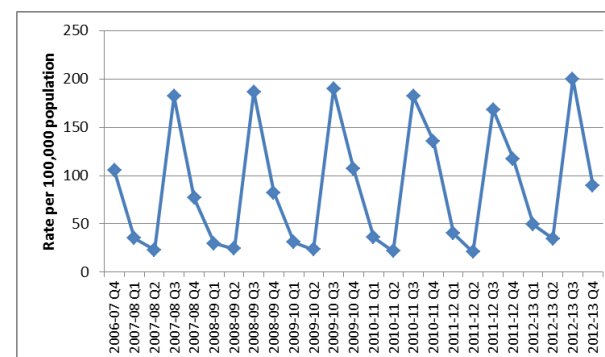
NHS Outcomes Framework, indicator 3.1.v: Total health gain as assessed by patients for elective procedures: psychological therapies

Indicator definition still in development

NHS Outcomes Framework, indicator 3.2: Emergency admissions for children with lower respiratory tract infections

		Rate per 100,000 population	% Change	Direction
Current Value	2012-13 Q4	90		
Change on previous year	2011-12 Q4	-28	-23.68%	↓
Long term change	2003-04 Q1	55	156.73%	↑

Desired direction: Down



Priority 5: Helping people to recover from episodes of ill health or following injury

NHS Outcomes Framework, indicator 3.3: Proportion of people who recover from major trauma

Indicator definition still in development

NHS Outcomes Framework, indicator 3.4: Proportion of stroke patients reporting an improvement in activity/lifestyle on the Modified Rankin Scale at 6 months

Data not yet available

Priority 5: Helping people to recover from episodes of ill health or following injury

NHS Outcomes Framework, indicator 3.5.i: The proportion of patients with fragility fractures recovering to their previous levels of mobility/walking ability at 30 days

% recovering to previous levels of mobility/walking at 30 days

Period	2011	2012
Value	25.9%	21.7%
Change		-4.2%
% change		-16.22%

Desired direction: Up

NHS Outcomes Framework, indicator 3.5.ii: The proportion of patients with fragility fractures recovering to their previous levels of mobility/walking ability at 120 days

% recovering to previous levels of mobility/walking at 120 days

Period	2011	2012
Value	48.7%	47.3%
Change		-1.4%
% change		-2.87%

Desired direction: Up

Priority 5: Helping people to recover from episodes of ill health or following injury

NHS Outcomes Framework, indicator 3.6.i: Proportion of older people (65 and over) who were still at home 91 days after discharge from hospital into reablement/rehabilitation services

Period	2011-12	2012-13
Value	82.7%	81.5%
Change		-1.2%

Desired direction: Up

NHS Outcomes Framework, indicator 3.6.ii: Proportion offered rehabilitation following discharge from acute or community hospital

Period	2011-12	2012-13
Value	3.2%	3.3%
Change		0.1%

Desired direction: Up

Priority 6: Ensuring people have a positive experience of care

NHS Outcomes Framework, indicator 4a.i:
Patient experience of primary care – GP services

% fairly good or very good

Period	2011-12	2012-13
Value	81.9%	86.7%
Change		4.8%
% change		8.9%

Desired direction: Up

NHS Outcomes Framework, indicator 4a.ii:
Patient experience of primary care – GP Out of Hours services

% fairly good or very good

Period	2011-12	2012-13
Value	70.9%	70.2%
Change		-0.65%
% change		-0.9%

Desired direction: Up

NHS Outcomes Framework, indicator 4a.iii: Patient experience of primary care – NHS Dental Services

% fairly good or very good

Period	2011-12	2012-13
Value	83.4%	84.0%
Change		0.6%
% change		0.7%

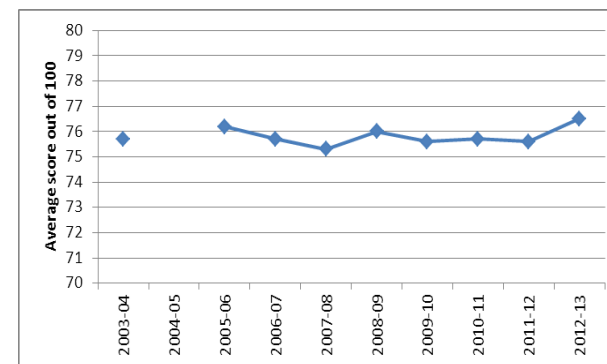
Desired direction: Up

Priority 6: Ensuring people have a positive experience of care

NHS Outcomes Framework, indicator 4b: Patient experience of hospital care

		Average score out of 100	% Change	Direction
Current Value	2012-13	76.50		
Change on previous year	2011-12	0.90	1.19%	↑
Long term change	2003-04	0.8	1.06%	↑

Desired direction: Up



NHS Outcomes Framework, indicator 4.1: Patient experience of outpatient services

Average score out of 100

Period	2009	2011
Value	78.6	79.5
Change		0.9

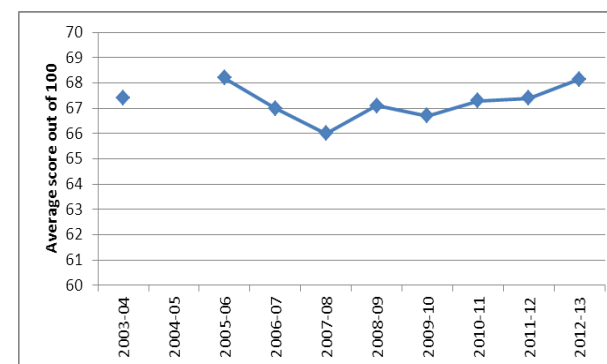
Desired direction: Up

Priority 6: Ensuring people have a positive experience of care

NHS Outcomes Framework, indicator 4.2: Responsiveness to in-patients' personal needs

		Average score out of 100	% Change	Direction
Current Value	2012-13	68.1		
Change on previous year	2011-12	0.7	1.10%	↑
Long term change	2003-04	0.7	1.10%	↑

Desired direction: Up



NHS Outcomes Framework, indicator 4.3:
Patient experience of A&E services

Average score out of 100

Period	2008	2012
Value	80.0	79.1
Change		-0.9
% change		-1.1%

Desired direction: Up

NHS Outcomes Framework, indicator 4.4.i:
Access to GP services

% fairly good or very good

Period	2011-12	2012-13
Value	79.1%	76.3%
Change		-2.8%
% change		-3.5%

Desired direction: Up

Priority 6: Ensuring people have a positive experience of care

NHS Outcomes Framework, indicator 4.4.ii Access to NHS Dental Services

% that gained an appointment in the last 2 years

Period	2011-12	2012-13
Value	94.5%	93.0%
Change		-1.6%
% change		-1.7%

Desired direction: Up

NHS Outcomes Framework, indicator 4.5: Women's experience of maternity services

2010	Average score out of 100	77.0
------	--------------------------	------

Desired direction: Up

NHS Outcomes Framework, indicator 4.6: Bereaved carers' views on the quality of care In the last 3 months of life

% Good, Excellent or Outstanding

Period	Nov 10- Jun 11	2012
Value	76.00%	77.30%
Change		1.30%
% change		1.71%

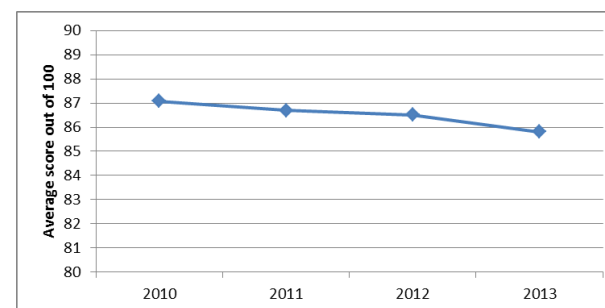
Desired direction: Up

Priority 6: Ensuring people have a positive experience of care

NHS Outcomes Framework, indicator 4.7: Patients experience of community mental health services

		Average score out of 100	% Change	Direction
Current Value	2013	85.81		
Change on previous year	2012	-0.70	-0.80%	↓
Long term change	N/A	N/A	N/A	

Desired direction: Up



NHS Outcomes Framework, indicator 4.8: Improving children and young people's experience of healthcare

Indicator definition still in development

NHS Outcomes Framework, indicator 4.9: Improving people's experience of integrated care

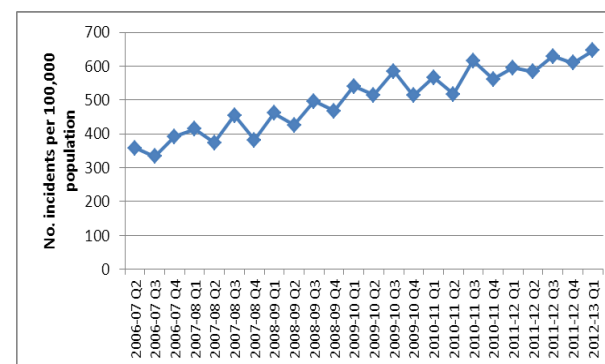
Indicator definition still in development

Priority 7: Treating and caring for people in a safe environment and protecting them from avoidable harm

NHS Outcomes Framework, indicator 5a: Patient Safety incident reporting

		No. incidents per 100,000 population	% Change	Direction
Current Value	2012-13 Q1	646		
Change on previous year	2011-12 Q1	51	8.48%	↑
Long term change	2003-04 Q3	645	215133%	↑

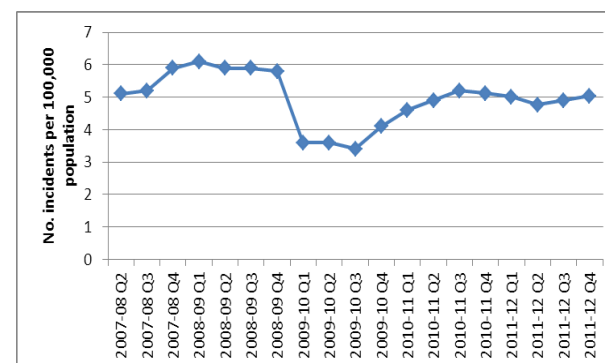
Desired direction: Up. At present the key priority is to improve the reporting of patient safety issues. This will drive this data upwards. Once this transition period is complete we will want incidents to fall.



NHS Outcomes Framework, indicator 5b: Safety incidents resulting in severe harm or death

		No. incidents per 100,000 population	% Change	Direction
Current Value	2011-12 Q4	5.0		
Change on previous year	2010-11 Q4	-0.1	-1.62%	↓
Long term change	2007-08 Q2	-0.1	-1.24%	↓

Desired direction: Down



Priority 7: Treating and caring for people in a safe environment and protecting them from avoidable harm

NHS Outcomes Framework, Indicator 5c: Hospital deaths attributable to problems in care

Indicator definition still in development

NHS Outcomes Framework, Indicator 5.1: Incidence of hospital-related venous thromboembolism (VTE)

Technical issues with indicator still being refined

NHS Outcomes Framework, Indicator 5.3: Incidence of newly-acquired category 2, 3 and 4 pressure ulcers

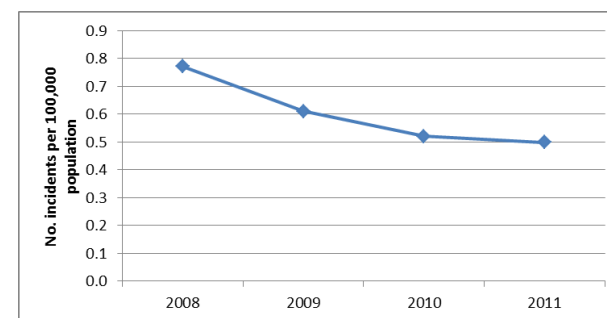
Technical issues with indicator still being refined

Priority 7: Treating and caring for people in a safe environment and protecting them from avoidable harm

NHS Outcomes Framework, Indicator 5.4: Incidence of medication errors causing serious harm

		No. incidents per 100,000 population	% Change	Direction
Current Value	2011	0.5		
Change on previous year	2010	0.0	-4.04%	↓
Long term change	N/A	N/A	N/A	

Desired direction: Down



NHS Outcomes Framework, Indicator 5.5: Admission of full-term babies to neonatal care:

2010	Proportion of all full-term babies who were admitted to neonatal care	5.1%
------	---	------

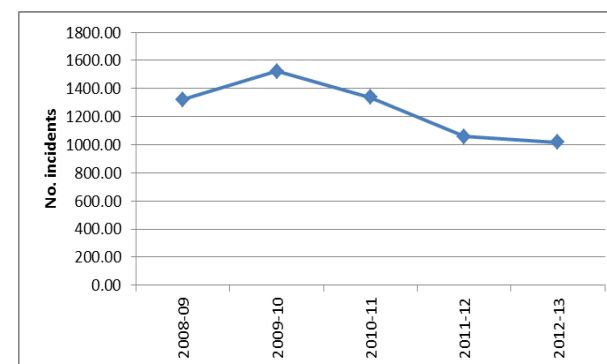
Desired direction: Down

Priority 7: Treating and caring for people in a safe environment and protecting them from avoidable harm

NHS Outcomes Framework, Indicator 5.6: Incidence of harm to children due to 'failure to monitor'

		No. incidents	% Change	Direction
Current Value	2012-13	1017		
Change on previous year	2011-12	-40	-3.78%	↓
Long term change	2008-09	-304.0	-23.01%	↓

Desired direction: Down

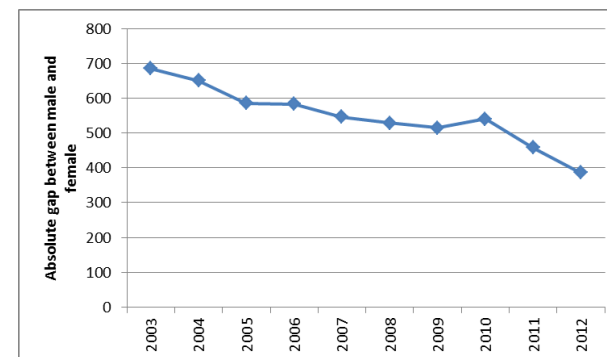


Priority 8 - Promoting equality and reducing inequalities in health outcomes

NHS Outcomes Framework, Indicator 1a.i: Potential Years of Life Lost (PYLL) from causes considered amenable to health care (Adults and Children) - Gender comparison

		Absolute gap between male and female	% Change	Direction
Current Value	2012	386.0		
1 Year Change	2011	-71.6	-15.65%	↓
5 Year Change	2003	-298.9	-43.64%	↓

Desired direction: Down



NHS Outcomes Framework, Indicator 1a.i: Potential Years of Life Lost (PYLL) from causes considered amenable to health care (Adults and Children) – Deprivation Analysis

		Relative change in slope index of inequality	Direction
1 Year Change	2011 to 2012	2.2%	↑
5 Year Change	2007 to 2012	-6.5%	↓

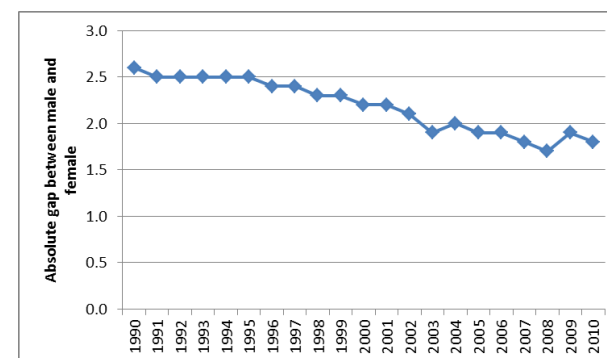
Desired direction: Down

Priority 8 - Promoting equality and reducing inequalities in health outcomes

NHS Outcomes Framework, Indicator 1b: Life expectancy at 75 - Gender comparison

		Absolute gap between male and female	% Change	Direction
Current Value	2010	1.8		
1 Year Change	2009	-0.1	-5.26%	↓
5 Year Change	1990	-0.8	-30.77%	↓

Desired direction: Down



NHS Outcomes Framework, Indicator 1b.i: Life expectancy at 75 (Male) - Deprivation analysis

		Relative change in slope index of inequality	Direction
1 Year Change	2007-09 to 2008-10	-5.1%	↓
5 Year Change	2003-05 to 2008-10	5.0%	↑

Desired direction: Down

NHS Outcomes Framework, Indicator 1b.i: Life expectancy at 75 (Female) - Deprivation analysis

		Relative change in slope index of inequality	Direction
1 Year Change	2007-09 to 2008-10	-1.5%	↓
5 Year Change	2003-05 to 2008-10	21.5%	↑

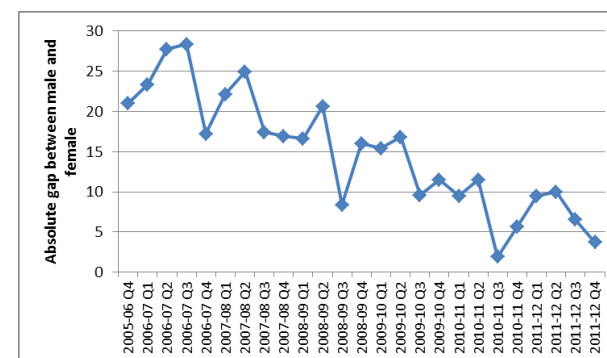
Desired direction: Down

Priority 8 - Promoting equality and reducing inequalities in health outcomes

NHS Outcomes Framework, Indicator 2.3.i: Unplanned hospitalisation for chronic ambulatory care sensitive conditions - Gender comparison

		Absolute gap between male and female	% Change	Direction
Current Value	2012-13 Q4	0.6		
1 Year Change	2011-12 Q4	-3.1	-83.78%	↓
5 Year Change	2003-04 Q1	-27.5	-97.86%	↓

Desired direction: Down



NHS Outcomes Framework, Indicator 2.3.i: Unplanned hospitalisation for chronic ambulatory care sensitive conditions - Deprivation analysis

		Relative change in slope index of inequality	Direction
1 Year Change	2011-12 Q3 to 2011-12 Q4	-4.9%	↓
5 Year Change	2010-11 Q3 to 2011-12 Q4	-1.0%	↓

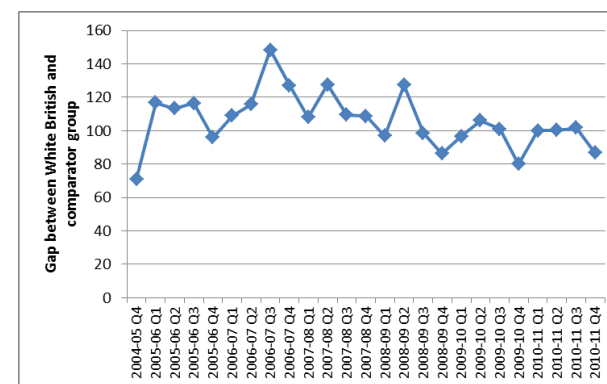
Desired direction: Down

Priority 8 - Promoting equality and reducing inequalities in health outcomes

NHS Outcomes Framework, Indicator 2.3.i: Unplanned hospitalisation for chronic ambulatory care sensitive conditions - White British compared to Asian or Asian British

		Gap between White British and comparator group	% Change on size of gap	Direction
Current Value	2010-11 Q4	86.8		
1 Year Change	2009-10 Q4	6.7	8.34%	↑
5 Year Change	2003-04 Q1	-3.2	-3.53%	↓

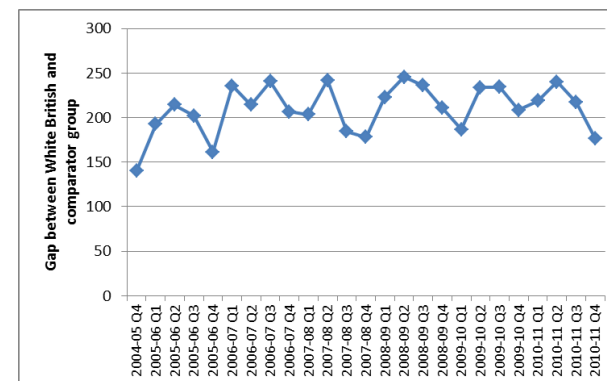
Desired direction: Down



NHS Outcomes Framework, Indicator 2.3.i: Unplanned hospitalisation for chronic ambulatory care sensitive conditions - White British compared to Black or Black British

		Gap between White British and comparator group	% Change on size of gap	Direction
Current Value	2010-11 Q4	176.6		
1 Year Change	2009-10 Q4	-31.8	-15.25%	↓
5 Year Change	2003-04 Q1	22.8	14.80%	↑

Desired direction: Down

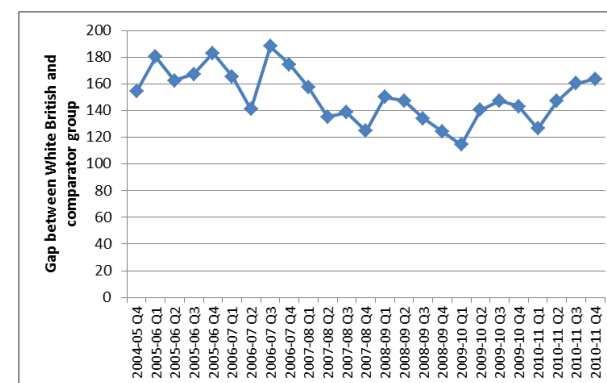


Priority 8 - Promoting equality and reducing inequalities in health outcomes

NHS Outcomes Framework, Indicator 2.3.i: Unplanned hospitalisation for chronic ambulatory care sensitive conditions - White British compared to Other Ethnic Group

		Gap between White British and comparator group	% Change on size of gap	Direction
Current Value	2010-11 Q4	163.7		
1 Year Change	2009-10 Q4	20.6	14.40%	↑
5 Year Change	2003-04 Q1	22.7	16.06%	↑

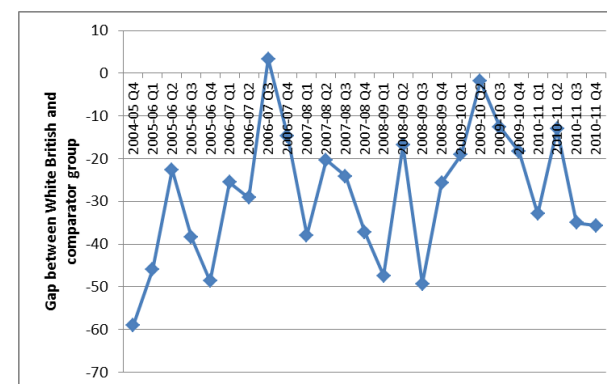
Desired direction: Down



NHS Outcomes Framework, Indicator 2.3.i: Unplanned hospitalisation for chronic ambulatory care sensitive conditions - White British compared to Mixed

		Gap between White British and comparator group	% Change on size of gap	Direction
Current Value	2010-11 Q4	-35.7		
1 Year Change	2009-10 Q4	-17.4	94.82%	↑
5 Year Change	2003-04 Q1	-5.1	16.67%	↑

Desired direction: Down

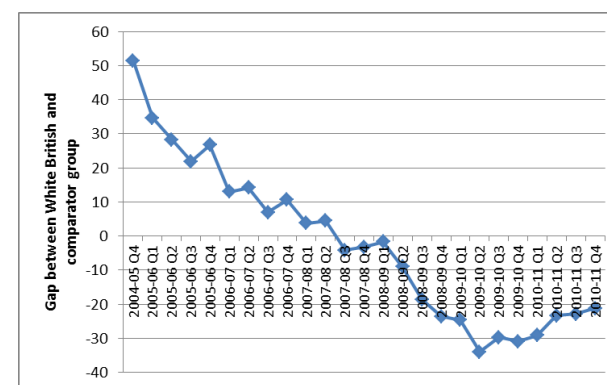


Priority 8 - Promoting equality and reducing inequalities in health outcomes

NHS Outcomes Framework, Indicator 2.3.i: Unplanned hospitalisation for chronic ambulatory care sensitive conditions - White British compared to Other White ethnicity

		Gap between White British and comparator group	% Change on size of gap	Direction
Current Value	2010-11 Q4	-21.3		
1 Year Change	2009-10 Q4	9.7	-31.34%	↓
5 Year Change	2003-04 Q1	-97.1	-128.03%	↓

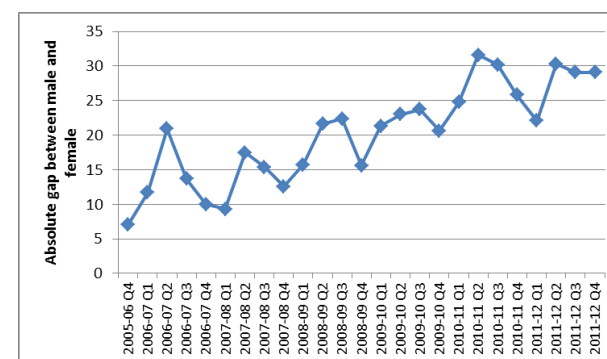
Desired direction: Down



NHS Outcomes Framework, Indicator 3a: Emergency admissions for acute conditions that should not usually require hospital admission - Gender comparison

		Absolute gap between male and female	% Change	Direction
Current Value	2012-13 Q4	29.6		
Change on previous year	2011-12 Q4	0.5	1.72%	↑
Long term change	2003-04 Q1	27.4	1245.45%	↑

Desired direction: Down



Priority 8 - Promoting equality and reducing inequalities in health outcomes

NHS Outcomes Framework, Indicator 3a: Emergency admissions for acute conditions that should not usually require hospital admission - Deprivation analysis

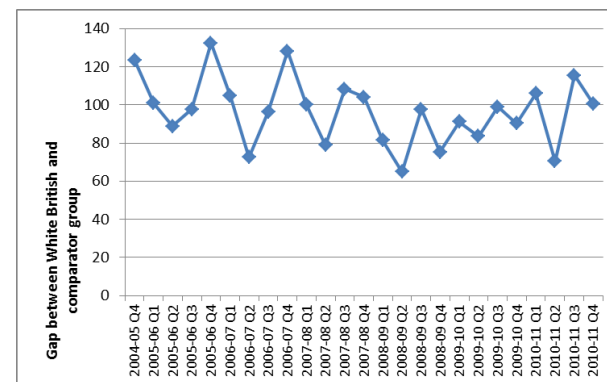
		Relative change in slope index of inequality	Direction
1 Year Change	2011-12 Q3 to 2011-12 Q4	-4.9%	↓
5 Year Change	2010-11 Q3 to 2011-12 Q4	-9.1%	↓

Desired direction: Down

NHS Outcomes Framework, Indicator 3a: Emergency admissions for acute conditions that should not usually require hospital admission - White British compared to Asian or Asian British

		Gap between White British and comparator group	% Change on size of gap	Direction
Current Value	2010-11 Q4	100.7		
Change on previous year	2009-10 Q4	10.4	11.55%	↑
Long term change	2003-04 Q1	24.7	32.43%	↑

Desired direction: Down

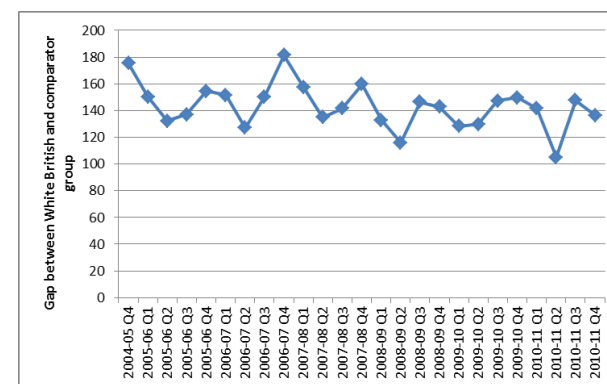


Priority 8 - Promoting equality and reducing inequalities in health outcomes

NHS Outcomes Framework, Indicator 3a: Emergency admissions for acute conditions that should not usually require hospital admission - White British compared to Black or Black British

		Gap between White British and comparator group	% Change on size of gap	Direction
Current Value	2010-11 Q4	136.4		
1 Year Change	2009-10 Q4	-13.4	-8.95%	↓
5 Year Change	2003-04 Q1	-6.3	-4.42%	↓

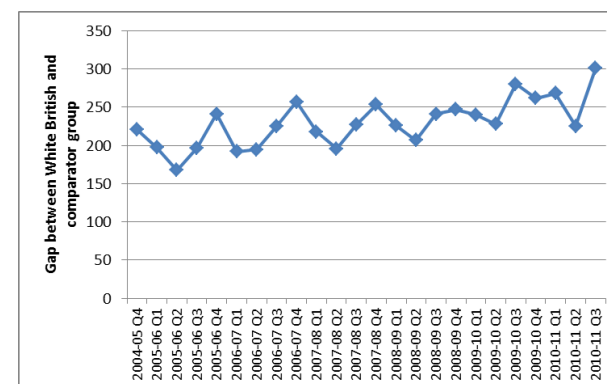
Desired direction: Down



NHS Outcomes Framework, Indicator 3a: Emergency admissions for acute conditions that should not usually require hospital admission - White British compared to Other Ethnic Group

		Gap between White British and comparator group	% Change on size of gap	Direction
Current Value	2010-11 Q4	304.6		
1 Year Change	2009-10 Q4	42.7	16.33%	↑
5 Year Change	2003-04 Q1	168.6	123.93%	↑

Desired direction: Down

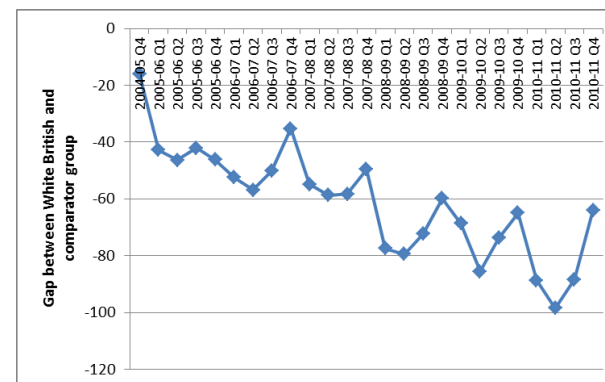


Priority 8 - Promoting equality and reducing inequalities in health outcomes

NHS Outcomes Framework, Indicator 3a: Emergency admissions for acute conditions that should not usually require hospital admission - White British compared to Mixed

		Gap between White British and comparator group	% Change on size of gap	Direction
Current Value	2010-11 Q4	-63.95		
1 Year Change	2009-10 Q4	0.95	-1.46%	↓
5 Year Change	2003-04 Q1	-30.58	91.61%	↑

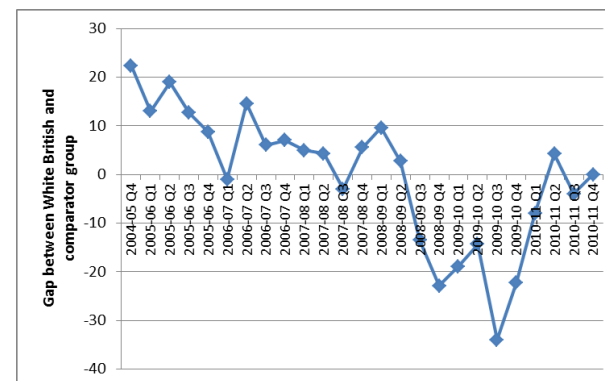
Desired direction: Down



NHS Outcomes Framework, Indicator 3a: Emergency admissions for acute conditions that should not usually require hospital admission - White British compared to Other White ethnicity

		Gap between White British and comparator group	% Change on size of gap	Direction
Current Value	2010-11 Q4	-0.05		
1 Year Change	2009-10 Q4	22.15	-99.77%	↓
5 Year Change	2003-04 Q1	-40.40	-100.12%	↓

Desired direction: Down

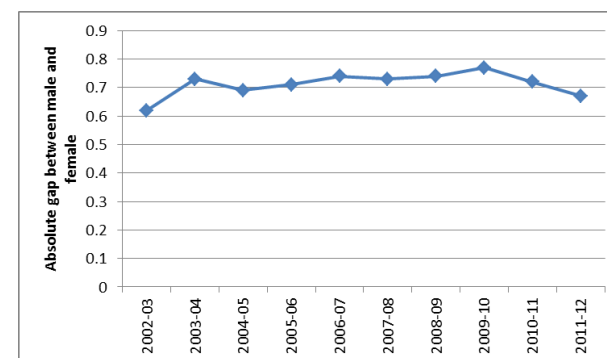


Priority 8 - Promoting equality and reducing inequalities in health outcomes

NHS Outcomes Framework, Indicator 3b: Emergency readmissions within 30 days of discharge from hospital - Gender comparison

		Absolute gap between male and female	% Change	Direction
Current Value	2011-12	0.67		
1 Year Change	2010-11	-0.05	-6.94%	↓
5 Year Change	2002-03	0.05	8.06%	↑

Desired direction: Down



NHS Outcomes Framework, Indicator 3b: Emergency readmissions within 30 days of discharge from hospital - Deprivation analysis

		Relative change in slope index of inequality	Direction
1 year change	2010-11 to 2011-12	10.9%	↑
5 year change	2006-07 to 2011-12	-4.8%	↓

Desired direction: Down

Priority 8 - Promoting equality and reducing inequalities in health outcomes

NHS Outcomes Framework, Indicator 4a.i: Patient experience of primary care - GP Services - Gender comparison

		Absolute gap between male and female	% Change	Direction
Current Value	2012-13	1.0%		
1 Year Change	2011-12	-0.1%	-10.66%	↓
5 Year Change	N/A	N/A	N/A	

Desired direction: Down

NHS Outcomes Framework, Indicator 4a.i: Patient experience of primary care - GP Services - Deprivation Analysis

		Relative change in slope index of inequality	Direction
1 Year Change	2012-13 to 2012-13	5.6%	↑
5 Year Change	2007-08 to 2012-13	N/A	

Desired direction: Down

Priority 8 - Promoting equality and reducing inequalities in health outcomes

NHS Outcomes Framework, Indicator 4a.i: Patient experience of primary care - GP Services - White British compared to Asian or Asian British

		Gap between White British and comparator group	% Change on size of gap	Direction
Current Value	2012-13	-11.0%		
1 Year Change	2011-12	-0.8%	8.27%	↑
5 Year Change	N/A	N/A	N/A	

Desired direction: Down

NHS Outcomes Framework, Indicator 4a.i: Patient experience of primary care - GP Services - White British compared to Black or Black British

		Gap between White British and comparator group	% Change on size of gap	Direction
Current Value	2012-13	-0.4%		
1 Year Change	2011-12	0.0%	7.82%	↑
5 Year Change	N/A	N/A	N/A	

Desired direction: Down

Priority 8 - Promoting equality and reducing inequalities in health outcomes

NHS Outcomes Framework, Indicator 4a.i: Patient experience of primary care - GP Services - White British compared to Other Ethnic Group

		Gap between White British and comparator group	% Change on size of gap	Direction
Current Value	2012-13	-4.6%		
1 Year Change	2011-12	1.4%	-23.37%	↓
5 Year Change	N/A	N/A	N/A	

Desired direction: Down

NHS Outcomes Framework, Indicator 4a.i: Patient experience of primary care - GP Services - White British compared to Mixed

		Gap between White British and comparator group	% Change on size of gap	Direction
Current Value	2012-13	-6.7%		
1 Year Change	2011-12	-0.5%	8.10%	↑
5 Year Change	N/A	N/A	N/A	

Desired direction: Down

Priority 8 - Promoting equality and reducing inequalities in health outcomes

NHS Outcomes Framework, Indicator 4a.i: Patient experience of primary care - GP Services - White British compared to Other White ethnicity

		Gap between White British and comparator group	% Change on size of gap	Direction
Current Value	2012-13	-5.8%		
1 Year Change	2011-12	0.0%	-0.27%	↓
5 Year Change	N/A	N/A	N/A	

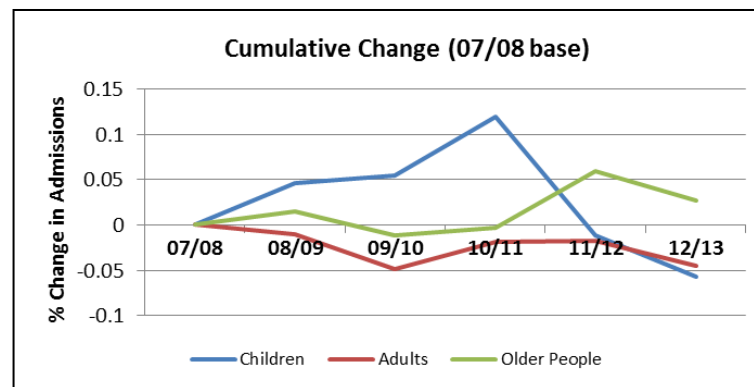
Desired direction: Down

Priority 8 - Promoting equality and reducing inequalities in health outcomes

Analysis of age has been carried out to show how the indicators for different age groups change over time. We expect utilisation to differ across age groups, therefore it is not appropriate to measure the gap between groups as we have above. Therefore this analysis shows changing inequality of resource utilisation between different age groups over time.

NHS Outcomes Framework, Indicator 2.3.i: Unplanned hospitalisation for chronic ambulatory care sensitive conditions – Age Analysis

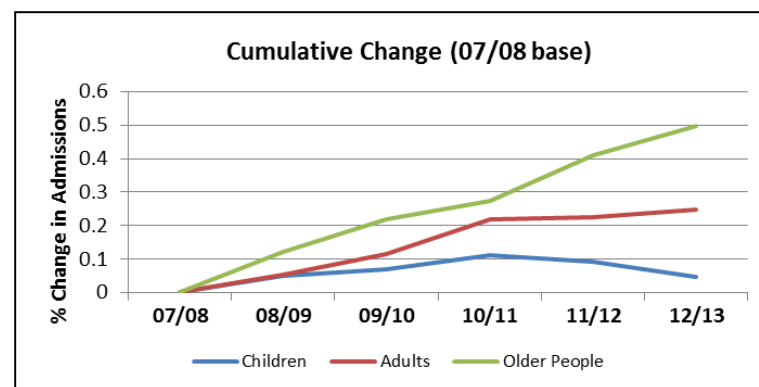
	1 Yr Change	5 Yr Change
	%	%
Children	-4.6%	-5.7%
Adults	-2.8%	-4.5%
Older People	-3.1%	2.7%



Priority 8 - Promoting equality and reducing inequalities in health outcomes

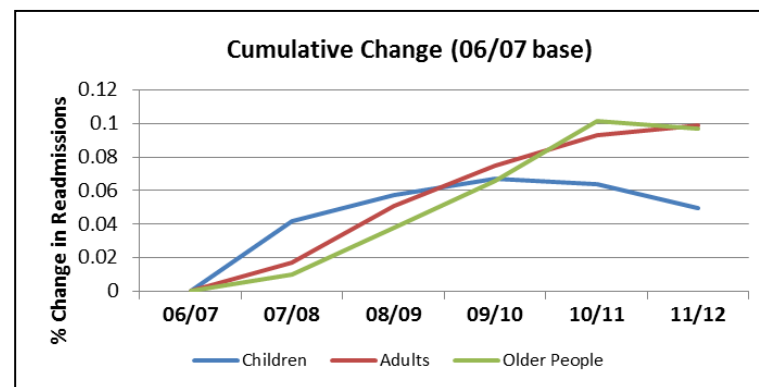
NHS Outcomes Framework, Indicator 3a: Emergency admissions for acute conditions that should not usually require hospital admission (all ages) – Age Analysis

	1 Yr Change	5 Yr Change
	%	%
Children	-4.3%	4.5%
Adults	1.9%	24.8%
Older People	6.1%	49.7%



NHS Outcomes Framework, Indicator 3b: Emergency readmissions within 30 days of discharge from hospital – Age Analysis

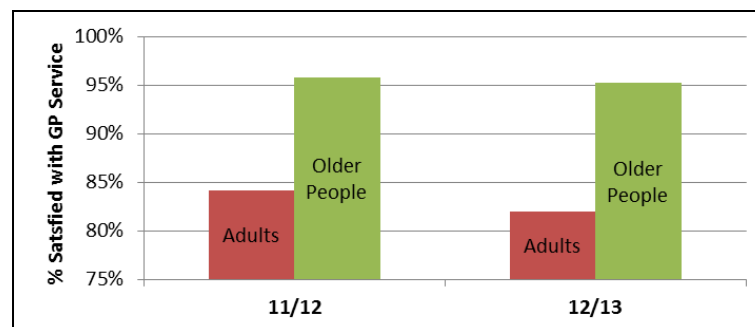
	1 Yr Change	5 Yr Change
	%	%
Children	-1.4%	4.9%
Adults	0.5%	9.9%
Older People	-0.4%	9.7%



Priority 8 - Promoting equality and reducing inequalities in health outcomes

NHS Outcomes Framework, Indicator 4a.i: Patient experience of primary care - GP Services – Age Analysis

	1 Yr Change
	%
Adults	-2.5%
Older People	-0.6%



Priority 10 - Becoming and excellent organisation

360 degree feedback

Data not yet available